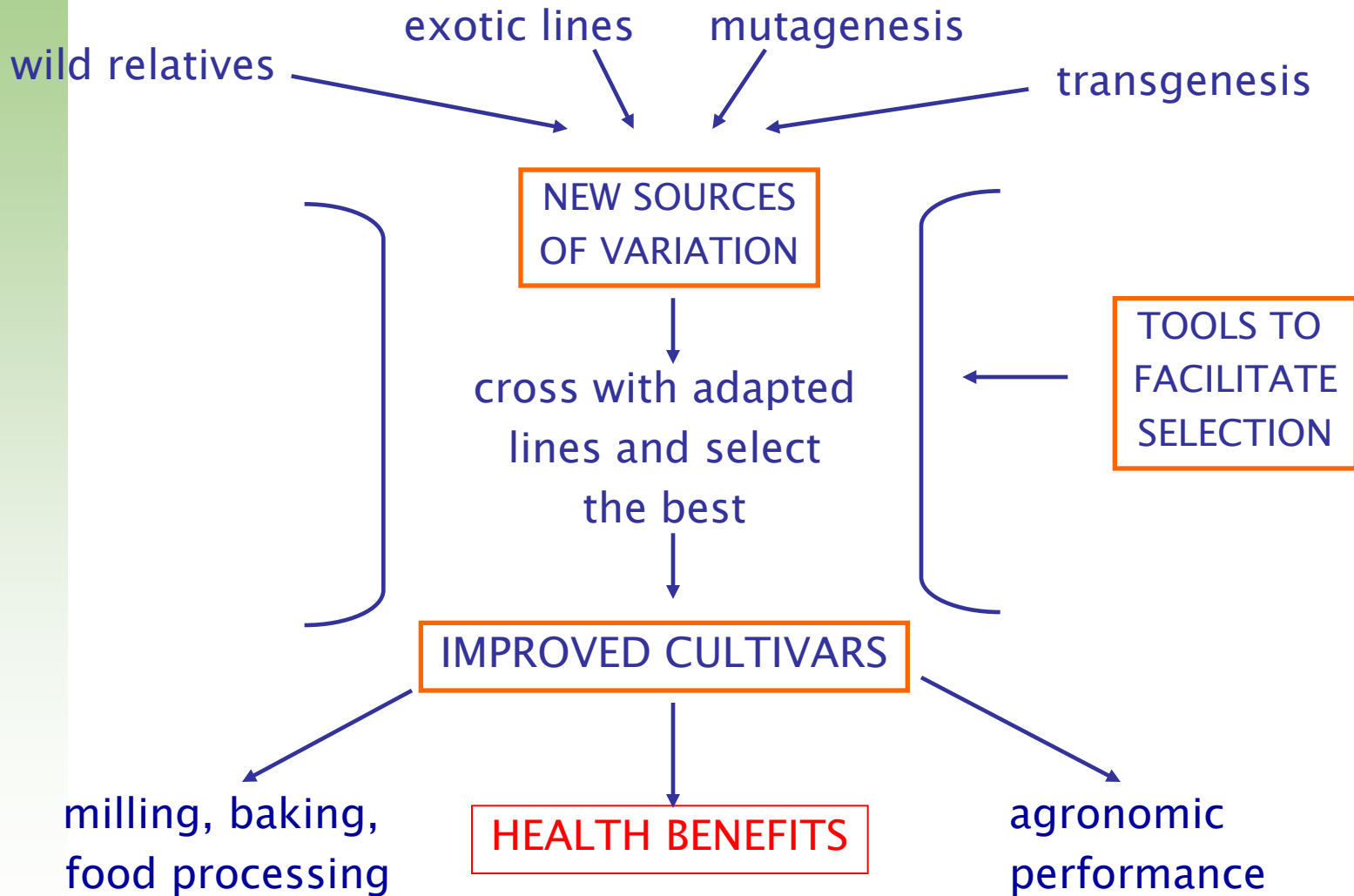


Improving the Health Benefits of Wheat

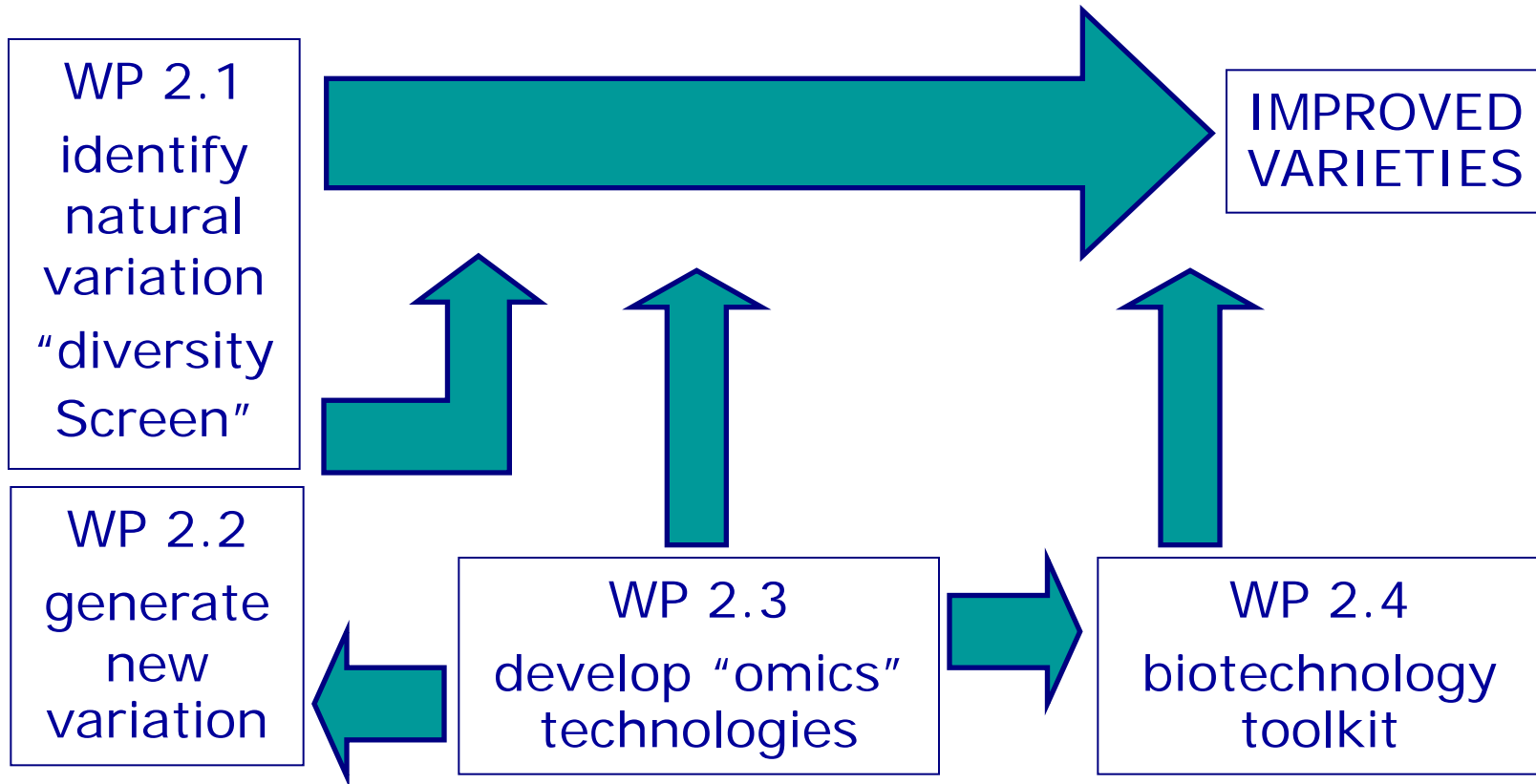
Peter Shewry and
Module 2 partners

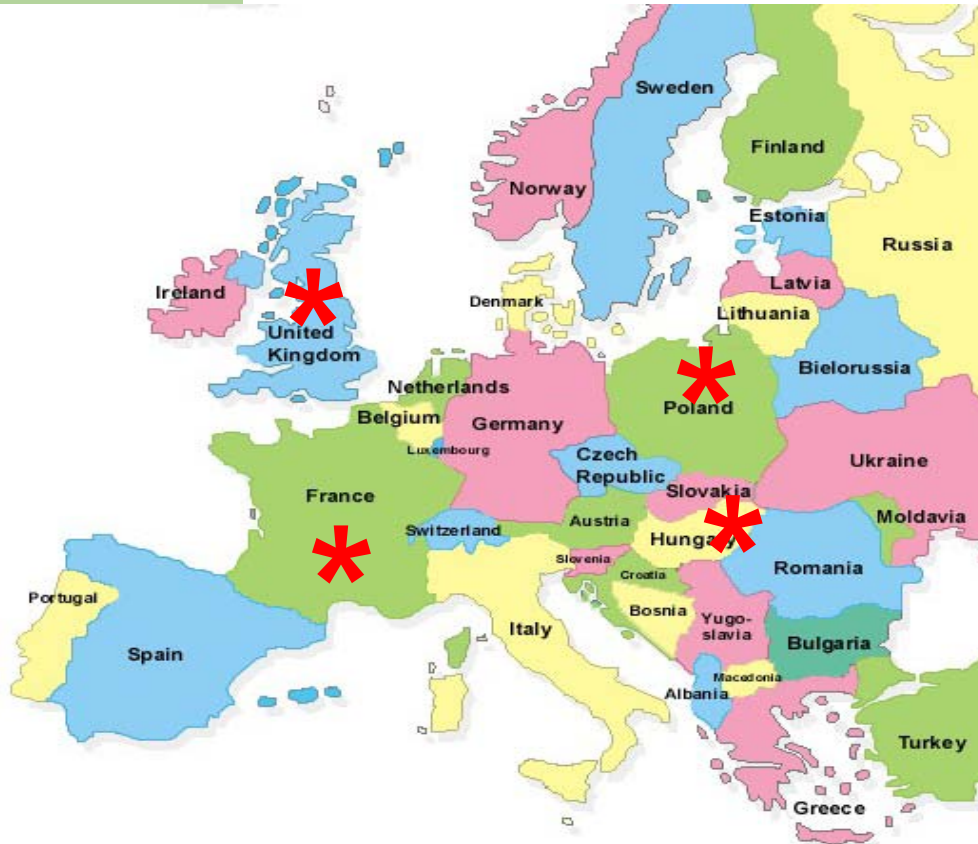


PLANT BREEDING IS THE SOLE DELIVERY MECHANISM FOR IMPROVED CEREALS



Crop improvement and biotechnology tool kit





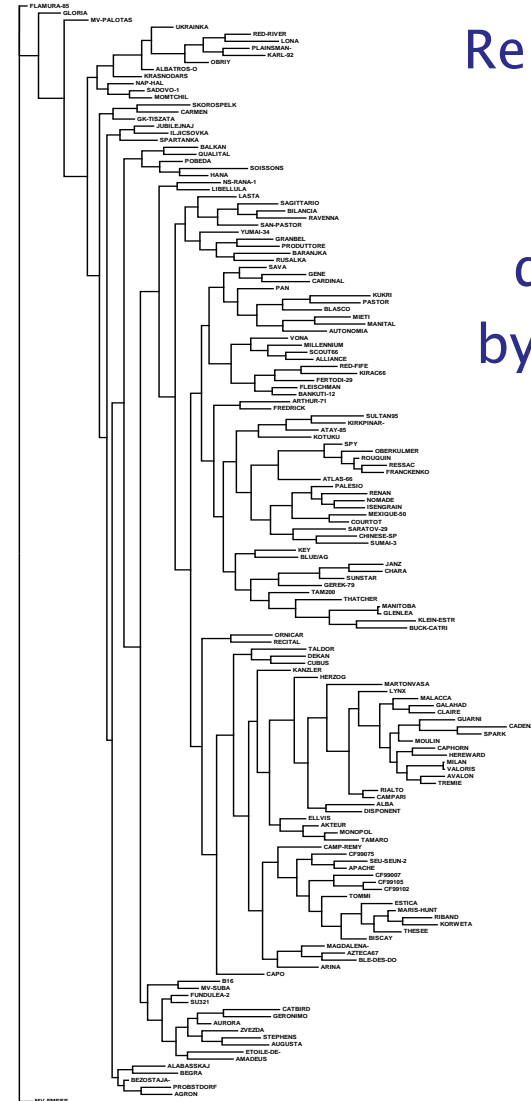
Grow 150 wheats and 50 other cereals in Hungary in 2005

Select 26 wheats and five ryes based on differences in composition

Grow in Hungary in 2005–6
Grow on four sites in 2006–7
UK, France, Hungary and Poland

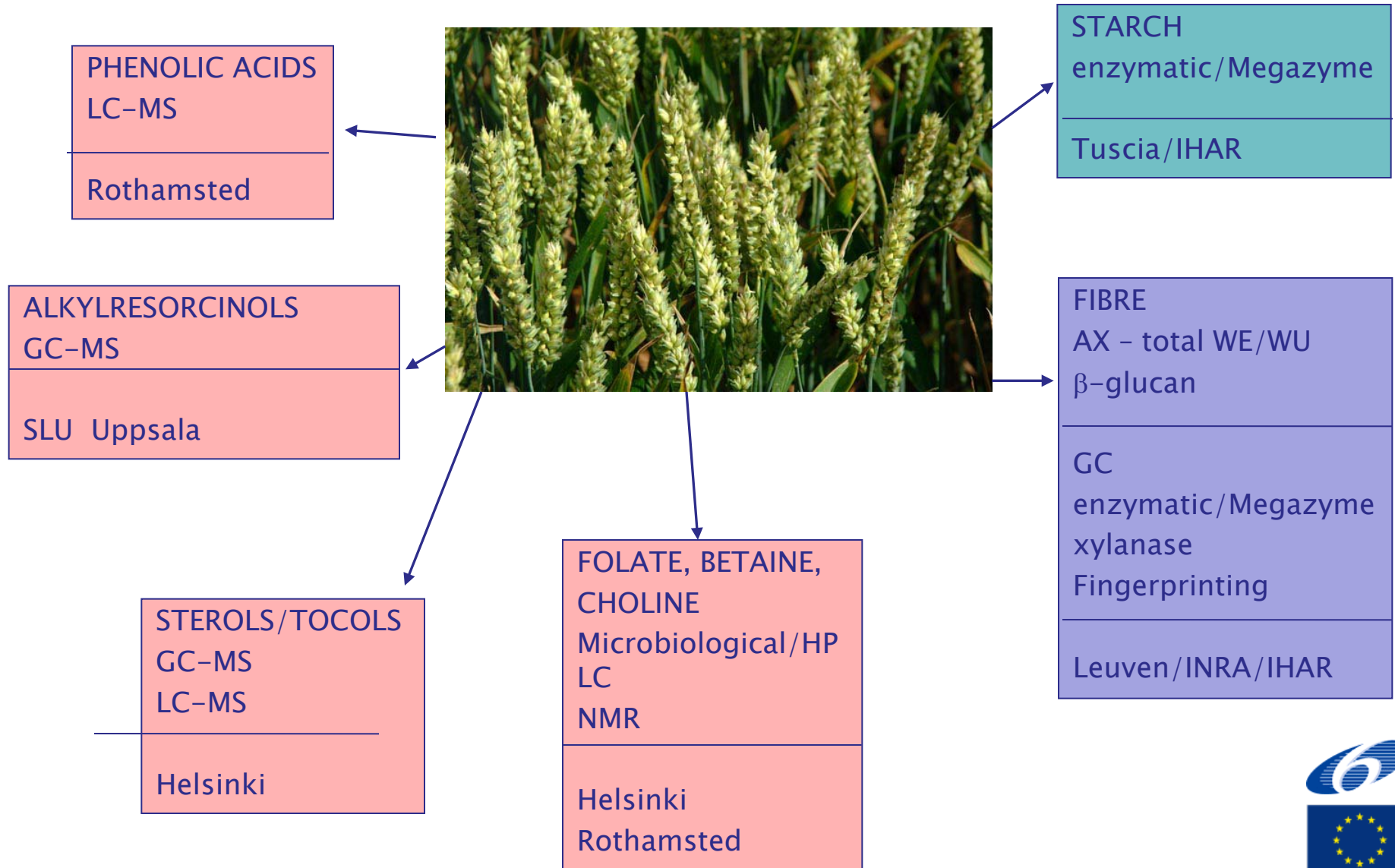
Determine compositions of phytochemicals and fibre components

Winter wheat	130
Spring wheat	20
Durum wheat	10
Barley	12
Rye	17
Oat	7
Spelt	9
<i>T. monococcum</i>	5
<i>T. dicoccum</i>	5

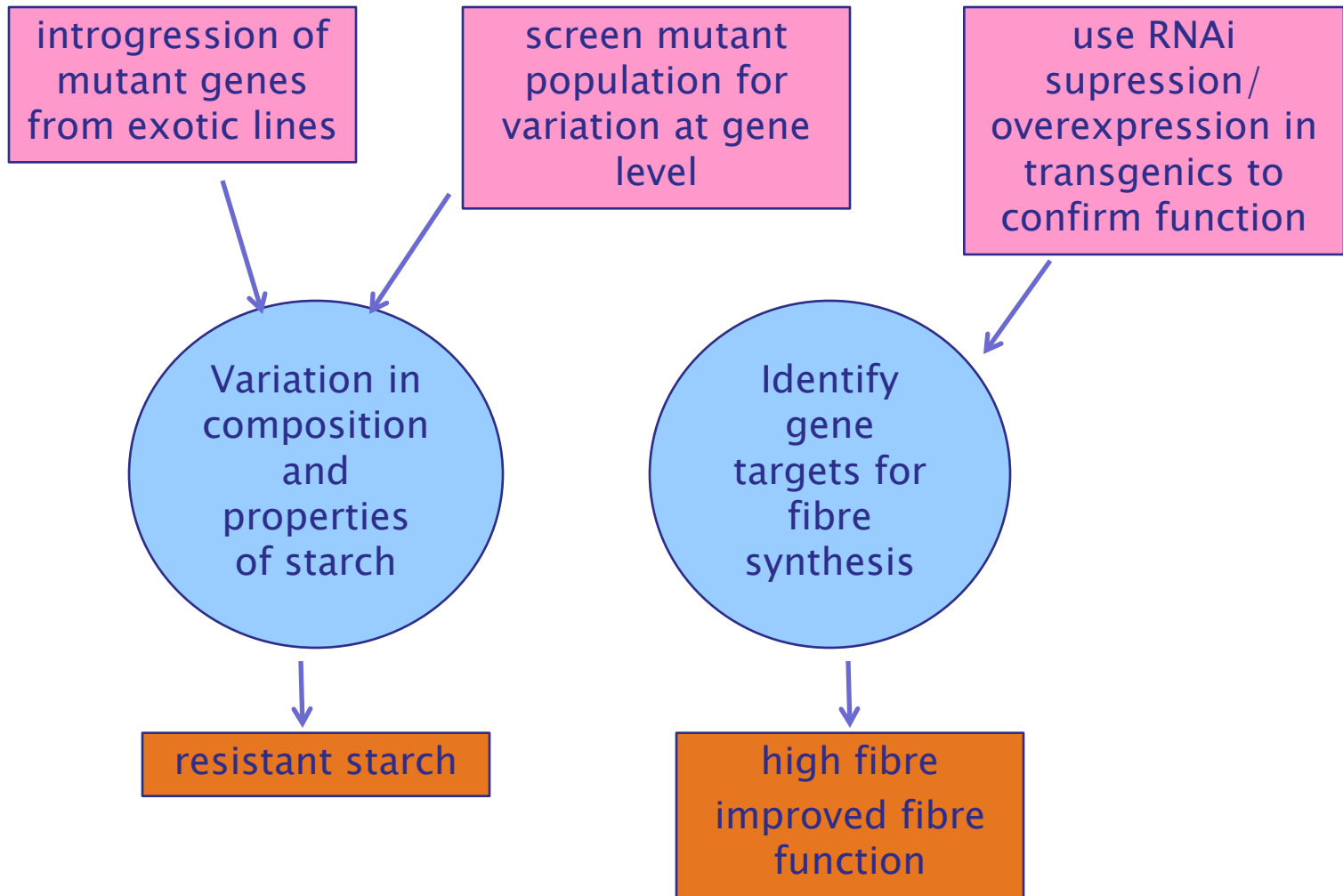


Relationships of wheat lines determined by molecular marker (DaRT) analysis

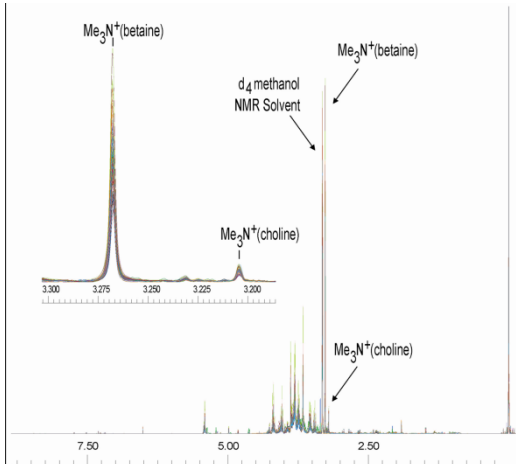




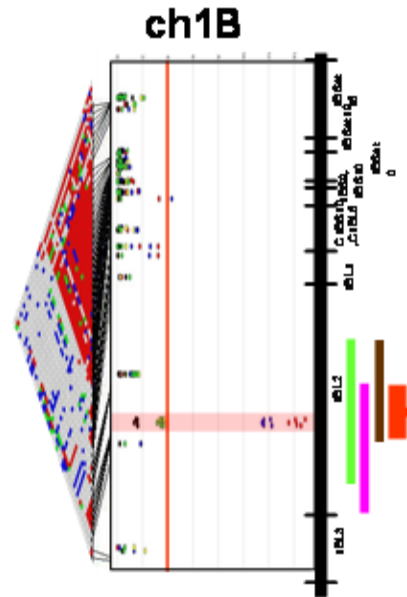
WP2.2 Developing new sources of variation



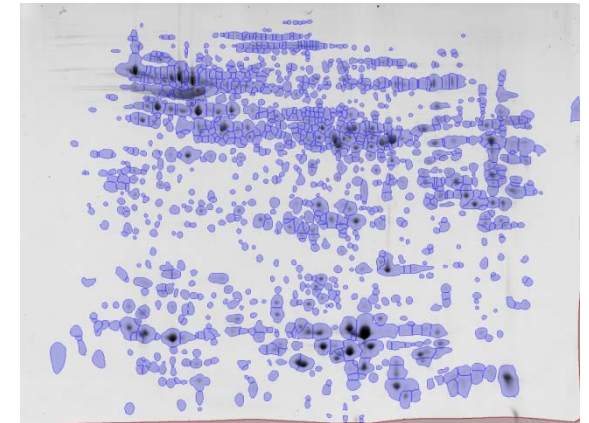
metabolomics



genomics



proteomics



High throughput analyses, molecular and biochemical markers

